



Tahoe K9 Platform Assembly/Installation Instructions

American Aluminum

www.EZRiderOnline.com

3882 U.S. Hwy 19 South

Perry, Florida 32348

PH: 1-800-277-0869

Fax: (850)-584-8485

Please read and fully understand assembly instruction before installing the unit

For Assistance Call 1-800-277-0869

Please review and double check the unit's Inventory checklist to make sure all components are included

!!CAUTION!!

!!Be sure not to drill or screw into any wiring while mounting equipment!!



READ ANY AND ALL
INSTRUCTIONS BEFORE
CONDUCTING INSTALL /
REPLACEMENT

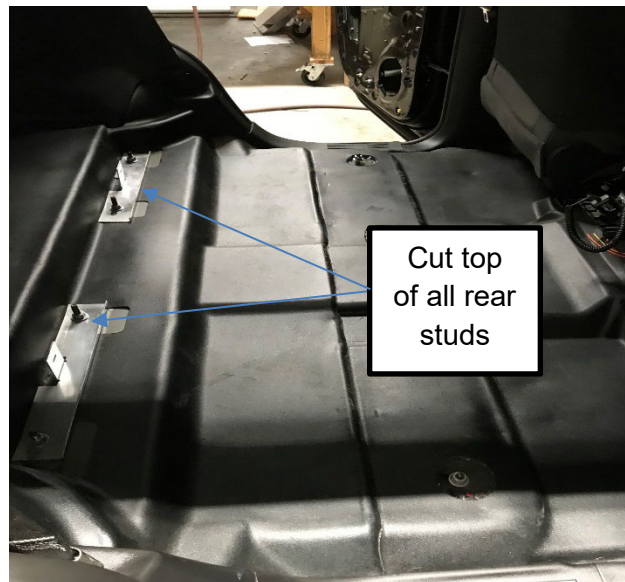
FAILURE TO FOLLOW
INSTRUCTIONS CAN LEAD
TO INJURY AND / OR
DAMAGE OF PRODUCT

USE APPROPRIATE
PERSONAL PROTECTIVE
EQUIPMENT WHEN
CONDUCTING INSTALL /
REPLACEMENT

CONTACT AMERICAN
ALUMINUM /CAMLOCKER AT
(800) 277-0869 WITH ANY
QUESTIONS BEFORE
PROCEEDING

Step #1 Installing the Pan

Prior to Installation, first remove seating from the rear compartment. Add mounting brackets to rear seat bolts. Then cut the studs above the nut to avoid interference with the pan.



Now you are ready to install the pan. You will need 2 ea. $\frac{3}{4}$ "x $\frac{1}{4}$ " bolts, 4 ea. flat washers, and 2 ea. locknuts. These will attach the rear of the pan to the mounting bracket.

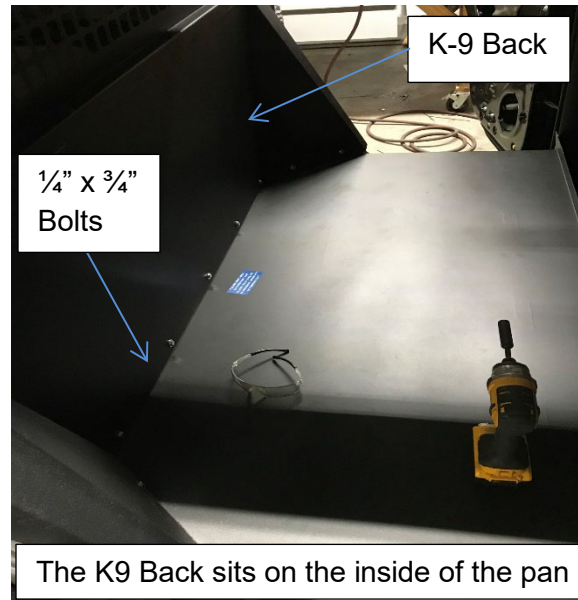


!!CAUTION!!

!!Be sure not to drill or screw into any wiring while mounting equipment!!

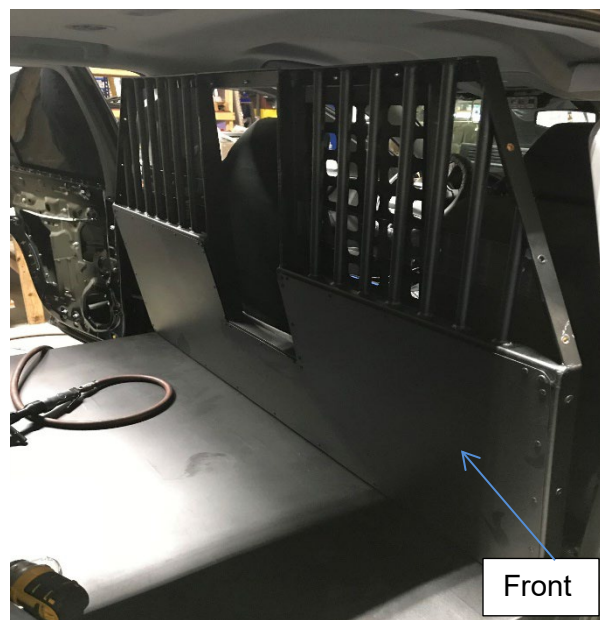
Step #2 Installing the Back

Once the Pan is installed find the K-9 Back and set it on top of the pan in front of the 2" lip and line the predrilled holes of the back with the nut inserts in the back lip of the pan. This will use 9 ea. $\frac{3}{4}$ " x $\frac{1}{4}$ " bolts with washers.



Step #3 Installing the Front

Position the K-9 Front on the front of the Pan behind the 2" lip with the door facing the front of the vehicle. Align the predrilled holes (nut inserts) of the front with the holes in the pan and fasten them together with 4 ea. $\frac{1}{4}$ " x $\frac{3}{4}$ " Hex head bolts with washers. Bolts are on the outside of the cage.

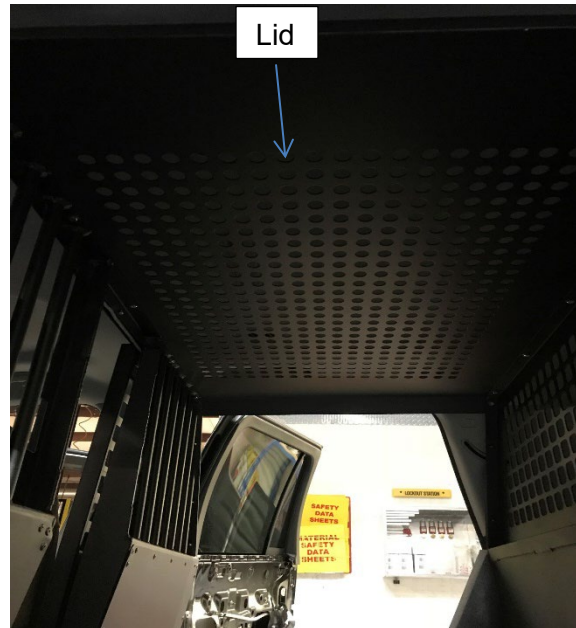


!!CAUTION!!

!!Be sure not to drill or screw into any wiring while mounting equipment!!

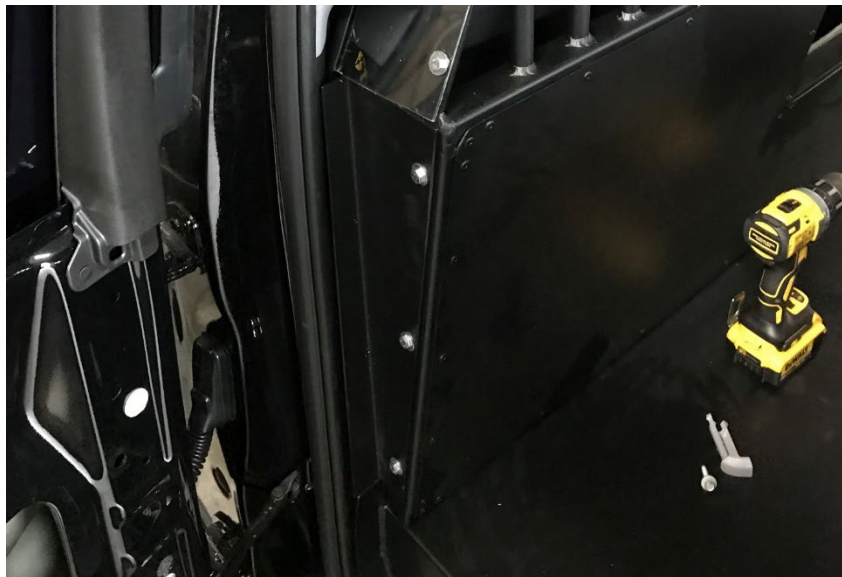
Step #4 Installing the Roof

Install the roof (canopy) on top of the unit. The Front and back will have predrilled holes that line up to the holes in the canopy. Use 14 ea. $\frac{3}{4}$ " x $\frac{1}{4}$ " Hex bolts and locknuts in all predrilled holes on the top and the corners.



Step #5 Installing the Front Wings

The front wings are installed one on each side with 3 ea. $\frac{3}{4}$ " x $\frac{1}{4}$ " bolts and washers. See below.

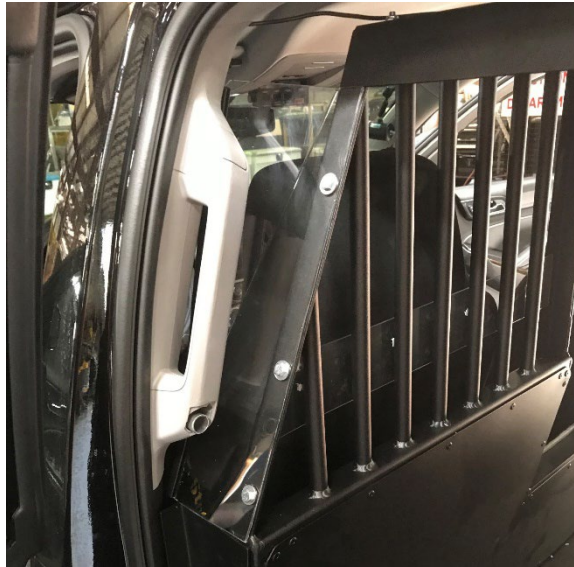


!!CAUTION!!

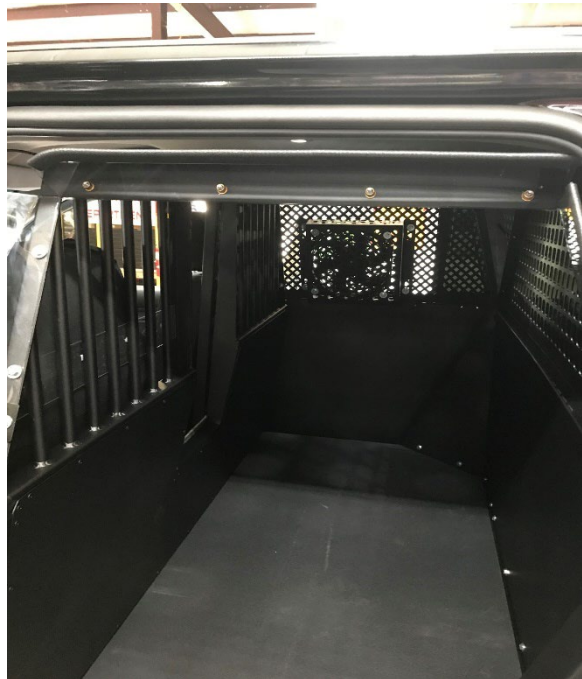
!!Be sure not to drill or screw into any wiring while mounting equipment!!

Step #6 Installing the Polycarbonate (Poly)

Attach the front Poly using 3each 1/4" x 3/4" bolts, washers and locknuts per side through the pre drilled holes.



Install Rear Poly Wings at this time using 2ea. 3/4" x 1/4" Hex bolts with flat washers at the predrill locations. You will need to be in the cargo area to install bolts.



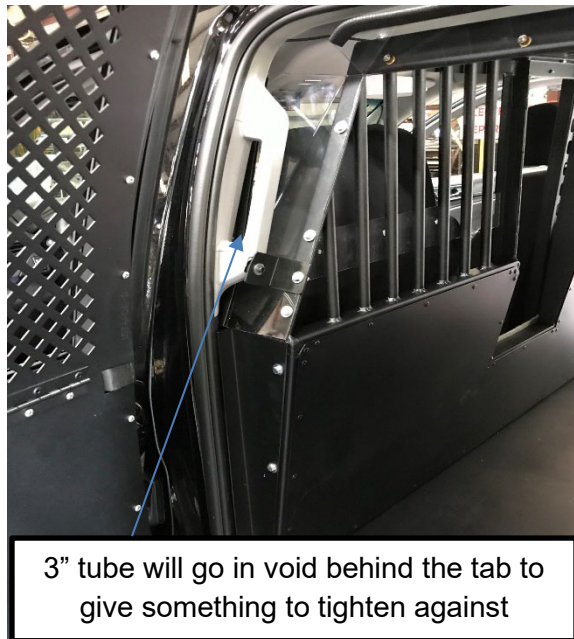
!!CAUTION!!

!!Be sure not to drill or screw into any wiring while mounting equipment!!

Also you will need to install the Poly between the top of the unit and the door. Using 4 ea. 3/4" x 1/4" bolts with washers per side using the predrilled holes. See detail below.

Step #7 installing the grab handle braces

Now that everything is in place you can now install the grab handle brace. You will need to remove the cover on the bottom bolt on the grab handle. Remove the bolt and put the 3" tube in the hole and replace bolt with the supplied 6mm x 100mm bolt and washer in kit. Then you will need to drill through the front and attach with a 1/4:" bolt, flat washer, and locknut. Like in picture below



Step #8 Installing the Rubber Mat

Lay the rubber mat on top of the Pan.



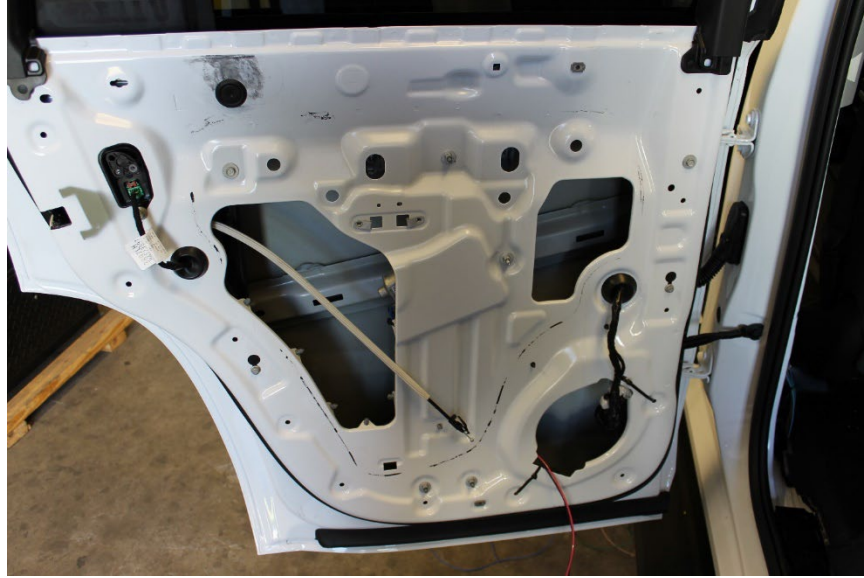
Rubber pan mat must be completely dry before laying it on the pan after every wash to prevent water damage to the Powder Coat on the Pan

!!CAUTION!!

!!Be sure not to drill or screw into any wiring while mounting equipment!!

Step #9 Removing the Factory Door Panels

Remove the factory Door Panels. Remove the door handles and any other protruding objects such as locks. Remove the rubber seal between the door and window. See picture below.



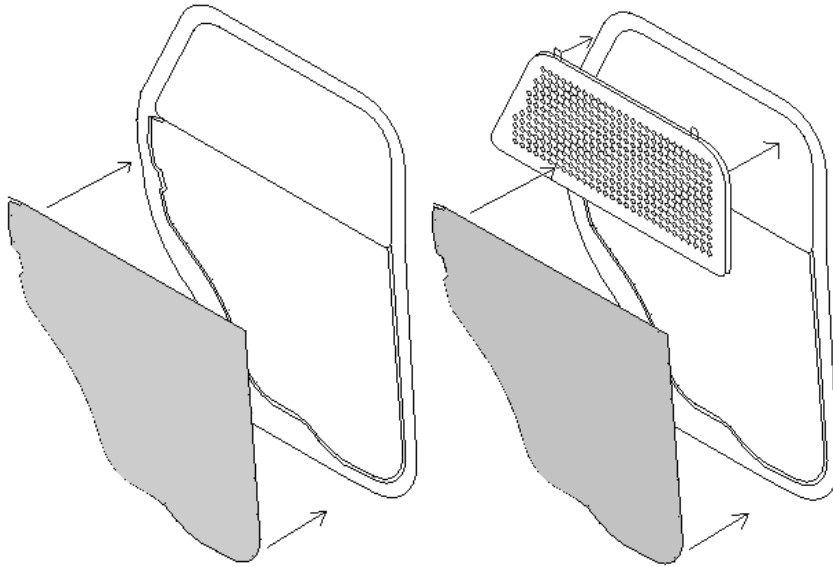
Step #10 Installing the Door and Window Panels

Position the door trim panels as shown in the below diagram. Using the Predrilled holes as a pattern mark the vehicle door frame for pilot holes that will be drilled. **Only drill one on each side for now just to hold door panel in place**

(After you have two screws holding the door panel in place, set the window guard and check for proper alignment. The window guard will be hinged to the door panel once both are set with proper alignment.)

!!CAUTION!!

!!Be sure not to drill or screw into any wiring while mounting equipment!!



Once you have the Window Guards and Door Panels set with proper alignment. Check the holes that were marked for the door panel (Remark them if necessary) and drill the pilot holes using a 9/64" drill bit. Now fasten the door panel to the door frame using #8 x 3/4" screws. Set the window guards in place and connect the hinge that comes attached to the window guards to the door panels with 11 ea. #8 x 3/4" screws for hardware kit. Now drill a pilot hole for each of the tabs on the window guard and fasten them down using the supplied # 8 x 3/4" Phillips Head screws. See picture below for completed door and window panels.

!!CAUTION!!

!!Be sure not to drill or screw into any wiring while mounting equipment!!

