

!!CAUTION!!

!!Be sure not to drill or screw into any wiring while mounting equipment!!



2020-CURRENT Explorer Prisoner / K9 Unit Assembly/Installation Instructions

American Aluminum

www.EZRiderOnline.com

3882 U.S. Hwy 19 South

Perry, Florida 32348

PH: 1-800-277-0869

Fax: (850)-584-8485

****Please read and fully understand assembly instruction before installing the unit****

For Assistance Call 1-800-277-0869

Please review and double check the unit's Inventory checklist to make sure all components are included

!!CAUTION!!

!!Be sure not to drill or screw into any wiring while mounting equipment!!



READ ANY AND ALL
INSTRUCTIONS BEFORE
CONDUCTING INSTALL /
REPLACEMENT

FAILURE TO FOLLOW
INSTRUCTIONS CAN LEAD
TO INJURY AND / OR
DAMAGE OF PRODUCT

USE APPROPRIATE
PERSONAL PROTECTIVE
EQUIPMENT WHEN
CONDUCTING INSTALL /
REPLACEMENT

CONTACT AMERICAN
ALUMINUM /CAMLOCKER AT
(800) 277-0869 WITH ANY
QUESTIONS BEFORE
PROCEEDING

Rubber pan mat must be completely dry before laying it on the pan after every wash to prevent water damage to the Powder Coat on the Pan

!!ATTENTION!!

Important Information!

- Prior to Installation, First remove the rear seating. While removing the rear seating **DO NOT** unhook the wiring harness going to each female seat belt buckle. The buckles will need to stay connected to the wiring harness to insure no vehicle error codes.
- Due to the door panel design of the 2020 Explorer the speaker pod will need to be removed. This also allows the K9 user to have more useable floor space in the K9 unit. The speaker pod can be reinstalled at a later date if needed.
- We utilize a clear polycarbonate material to fill in the gaps between the outside edge of the K9 unit and the interior of the vehicle at the door opening. This will be important in the case of an accident. The polycarbonate is designed to allow the side curtain airbag to deploy while also adding a layer of protection for the high energy K9.

!!CAUTION!!

!!Be sure not to drill or screw into any wiring while mounting equipment!!

Attention!

Prior to installing the prisoner side of the unit be sure the pan is properly aligned at the lower door jamb and the vehicle door will close properly on the K9 side. No portion of the pan should stick out past the vehicle weather stripping. This is to insure the k9 pan will not interact with the vehicle door.

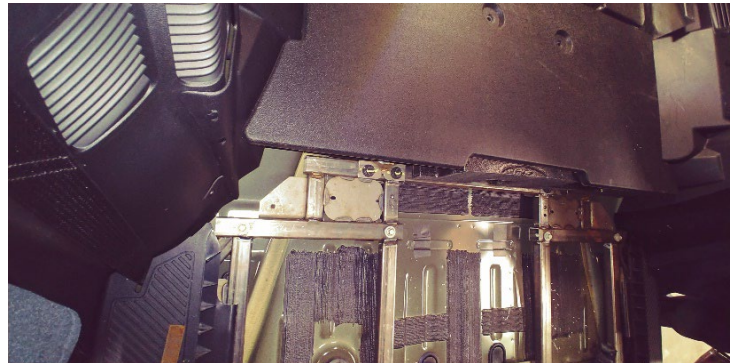
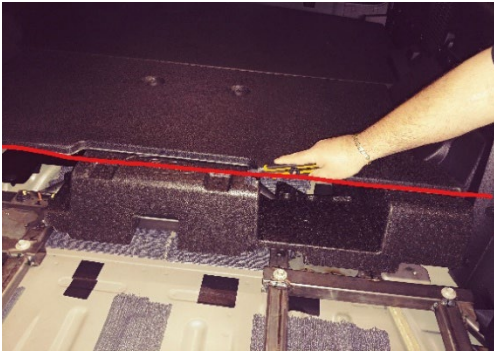


!!CAUTION!!

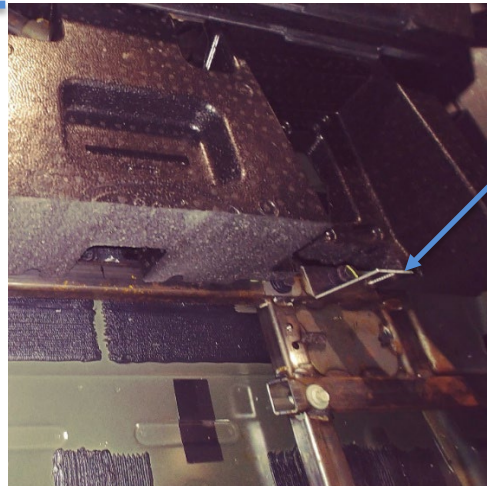
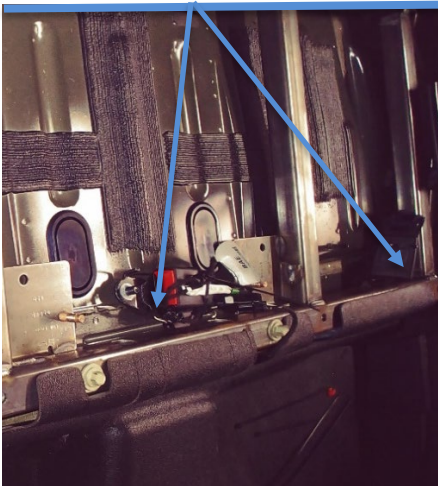
!!Be sure not to drill or screw into any wiring while mounting equipment!!

Step #1 Installing the Pan

Prior to installing the pan you will need to trim the foam under the false floor.



You will also need to need to bundle your seat belt buckle and wire pigtail together with a zip tie and tuck them out of the way.



The pan bracket will install on the outside bolt with the round hole down and the slotted hole facing the front of the vehicle.



With the vertical slot of the pan bracket and the horizontal slot of the pan lined up place a 5/8" 1/4 #20 Phillips bolt with a washer through and attach supplied lock nuts.

NOTE: Don't tighten bracket nut and bolt completely till the install is complete.

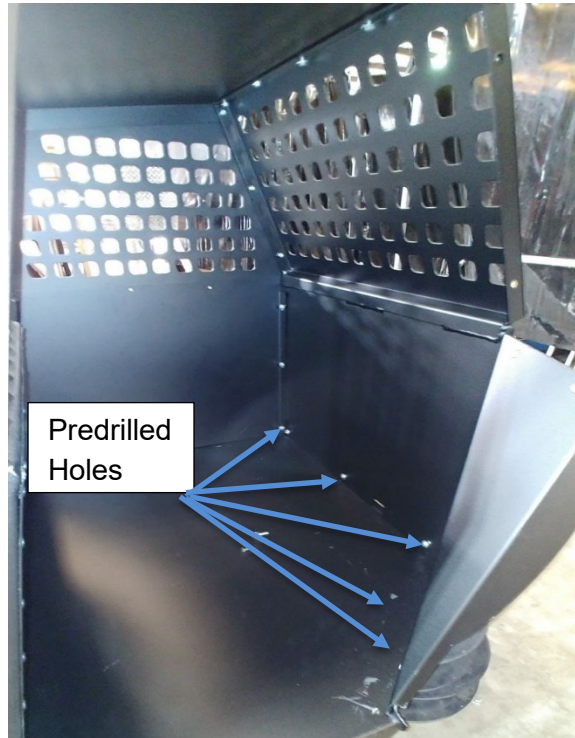
DO NOT DISCONNECT THE SEATBELT WIRING!!!

!!CAUTION!!

!!Be sure not to drill or screw into any wiring while mounting equipment!!

Step #2 INSTALLING THE BACK

Once the Pan is installed find the K-9 Back and set it on top of the pan in front of 2" lip and line the predrilled holes of the back with the nut inserts in the back lip of the pan



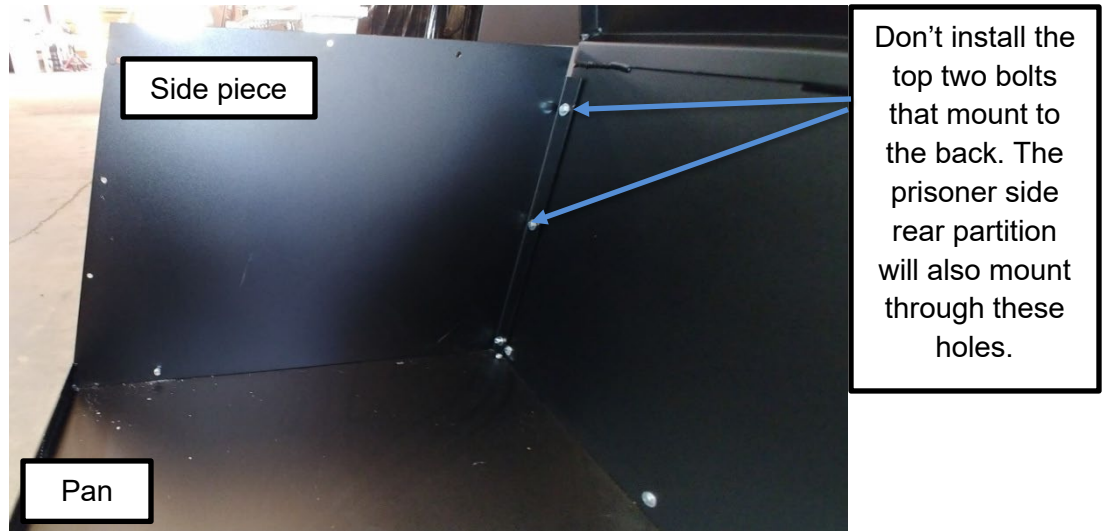
The back must be installed before the front. The back will be very difficult to install if the front is already installed.

!!CAUTION!!

!!Be sure not to drill or screw into any wiring while mounting equipment!!

STEP #3 INSTALLING THE K9 SIDE PIECE

Next install the side plate that serves as the divider between the dog and the prisoner. Attach the side to the K9 pan using the supplied 1/4" bolts and nuts in the predrilled holes. 3 ea. in the back and 1 ea. in the front bottom. No reason to tighten all the way yet because these will have other parts connecting to them later in process.



STEP #4 INSTALLING THE FRONT

Position the K-9 Front on the front of the Pan. Align the predrilled holes (nut inserts) of the front with the holes in the pan and fasten them together using 3 ea. 1/4" Phillips head bolts. Also connect the side piece to the front with 2 ea. self-tapping screws in bottom two pre drilled holes.

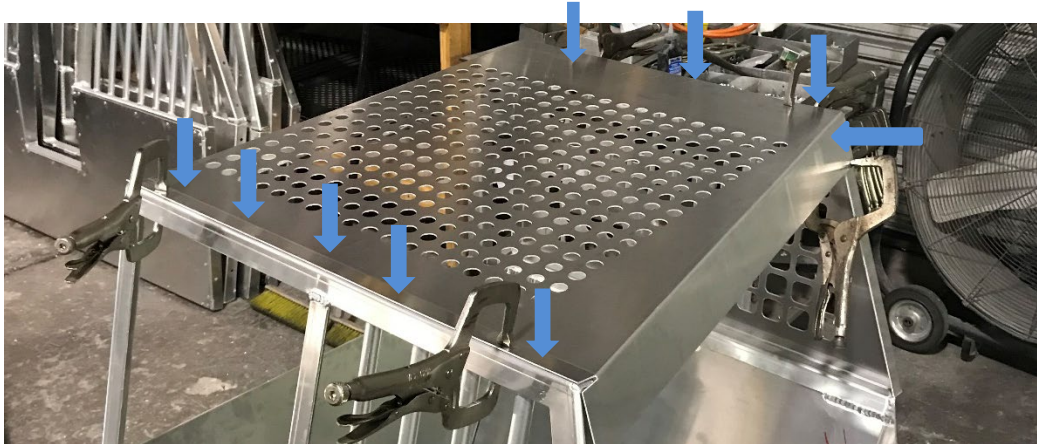


!!CAUTION!!

!!Be sure not to drill or screw into any wiring while mounting equipment!!

Step #5 INSTALLING THE LID

Install the roof (canopy) on top of the unit. The Front and back will have predrilled holes that line up to the holes in the canopy. Use 11 ea. 1/4 Phillips & lock nuts in all predrilled holes on the top and the corners. 5 ea. in the front and 6 ea. in the rear.



!!CAUTION!!

!!Be sure not to drill or screw into any wiring while mounting equipment!!

Step #6 INSTALLING THE POLY AND POLY COVER

Install the side Poly and Poly cover. The side Lexan attaches to the canopy using the supplied 5/8" bolts, washers and nuts. Also attach the side poly to the front and lower side panel using supplied 3/4" bolts.

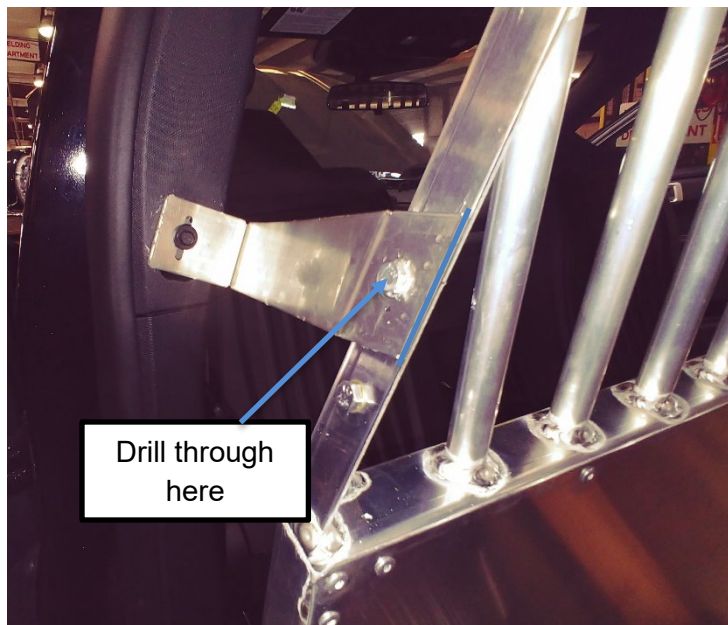


Attach the poly and poly cover through predrilled holes.

Poly goes on the K9 side behind the poly cover.

Step #7 INSTALLING THE K9 SIDE GRAB HANDLE BRACKET

Now that the K9 side of the unit is built you'll need to install the grab handle bracket. This will keep the unit in the correct position while installing the prisoner side front and rear partition.



Drill through here

Remove the factory grab handle brackets using a 10mm socket. You will use the factory 10mm bolt to attach the bracket to the B-pillar. You'll then line the rear most portion of the bracket with the front frame of the K9 unit as shown with the blue line. Then drill through and fasten with a 1/4 #20 Phillips bolt and locknut.

!!CAUTION!!

!!Be sure not to drill or screw into any wiring while mounting equipment!!

Step #8 INSTALLING THE PRISONER FRONT

Remove grab handle on the passenger side and attach the bracket with the bolt that holds the grab handle in place.



You will need to loosely attach the small grab handle bracket on the passenger side lower grab handle mounting point using the factory 10mm



Use 2 ea. $\frac{1}{4}$ " bolts and locknuts in the top through the predrill holes. Use 2 ea. $\frac{1}{4}$ " x bolts and in the bottom section into the predrill holes and nutserts.

!!CAUTION!!

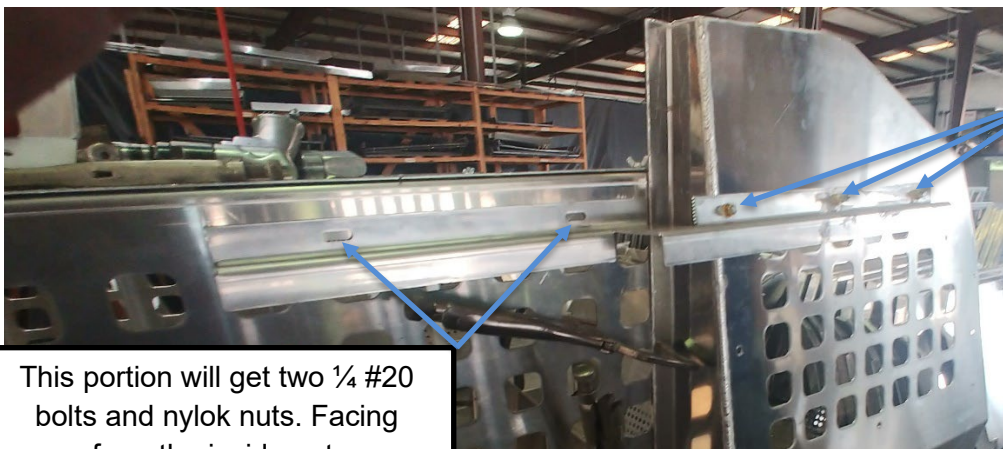
!!Be sure not to drill or screw into any wiring while mounting equipment!!

Step # 9 INSTALLING THE PRISONER BACK



Use 4 ea. bolts and nuts 4 ea. to install the prisoner side back. The prisoner side of the unit is designed to be a tight fit. It may be helpful to utilize an alignment tool to help with getting the holes aligned when installing the bolts.

Once you have the back mounted you will then install the prisoner side rear brace. The side of the brace that three nutserted holes will attach to the prisoner side utilizing the three top holes of the prisoner back. The slot hole on the other section of the brace will mount to the rear window of the unit.



The three nutserted holes will lineup with the top three holes the poly is bolted through.

This portion will get two ¼ #20 bolts and nylok nuts. Facing from the inside out.

!!CAUTION!!

!!Be sure not to drill or screw into any wiring while mounting equipment!!

Step #10 INSTALLING THE SPIT GUARD



The spit guard will attach with the same bolts that the top of the poly cover and lid connect with. You will need to drill the holes to match in the spit guard. These are the 3 bolts that were left out earlier.

Step #11 INSTALLING THE KICK PLATE



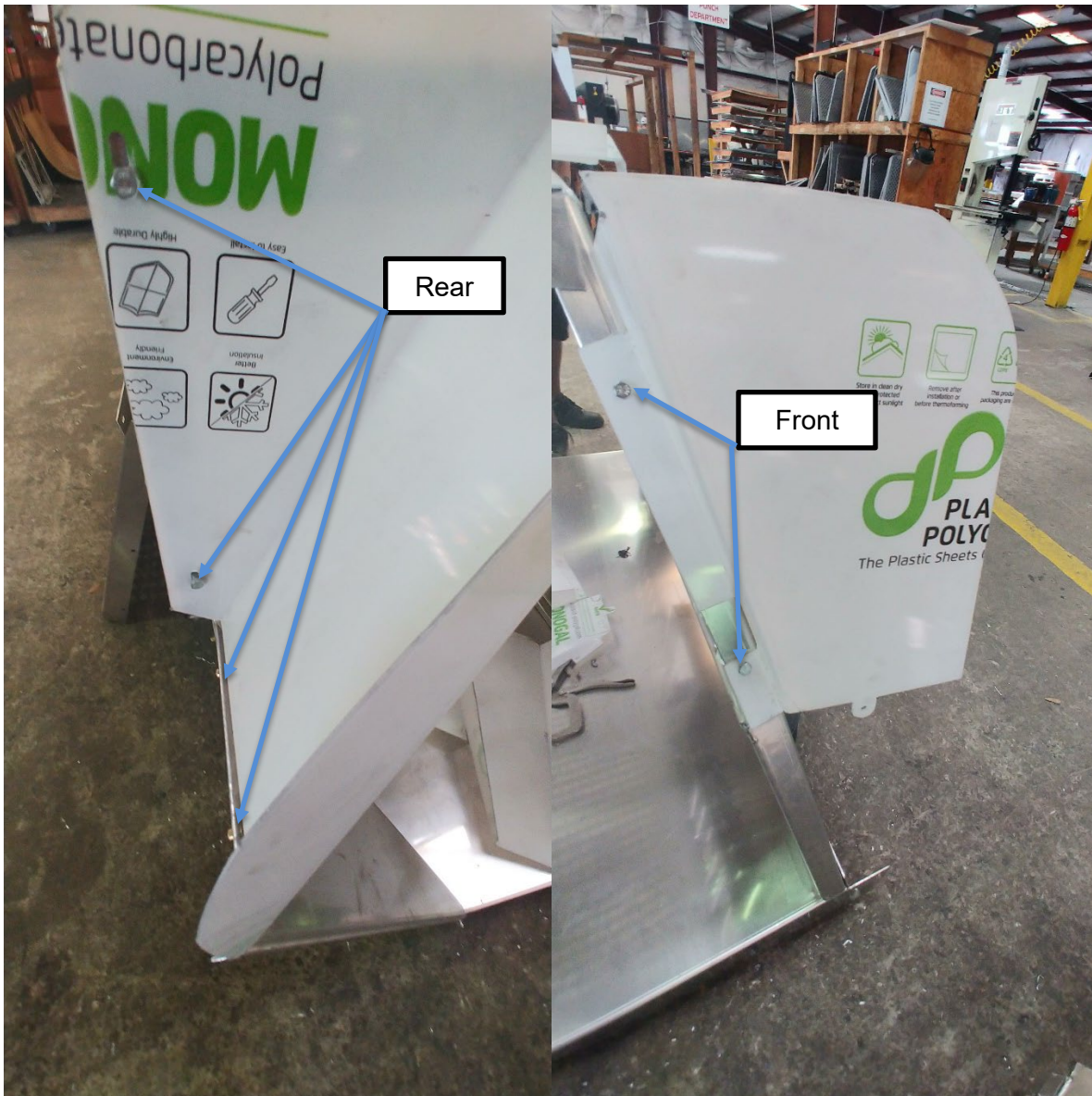
The kick plate will attach with the front bolt that the K9 side piece uses. In the front you will need to drill one more hole and attach.

!!CAUTION!!

!!Be sure not to drill or screw into any wiring while mounting equipment!!

STEP #12 Installing the Polycarbonate (Poly)

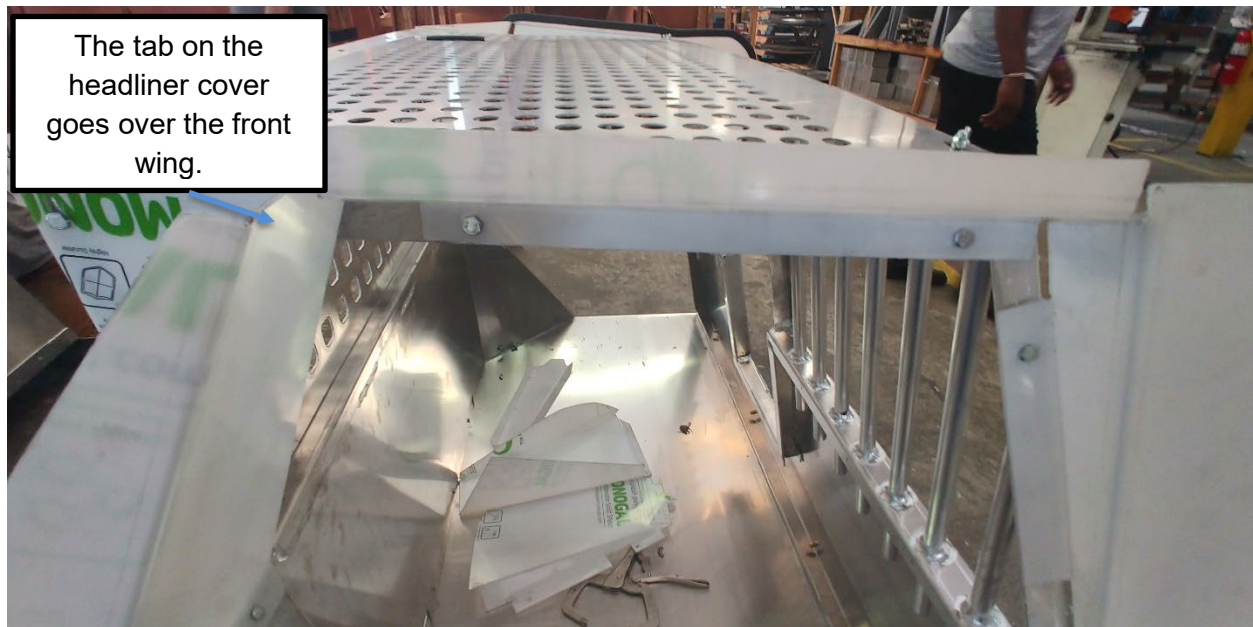
Attach the front Poly using 2 each 5/8 X 1/4 #20 Phillips bolts and washers. Attach the rear poly using 4 each 5/8 X 1/4 #20 Phillips bolts and washers.



To install the polycarbonate headliner cover you will need to hold the headliner cover in place with the pointed end facing the rear of the vehicle and mark the whole placement. Drill where marked. Attach using 2 each 5/8 X 1/4 #20 Phillips bolts and washers with lock nuts.

!!CAUTION!!

!!Be sure not to drill or screw into any wiring while mounting equipment!!



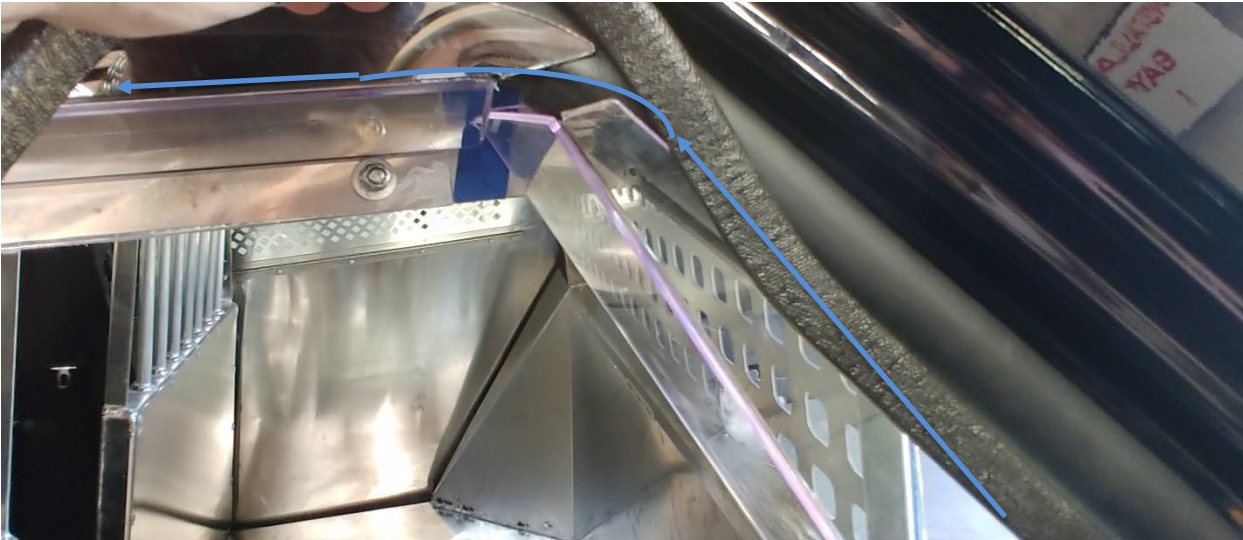
Step # 13 Installing the Black Rubber Poly Trim



!!CAUTION!!

!!Be sure not to drill or screw into any wiring while mounting equipment!!

Once you have the rear wing trimmed you'll need to continue running the trim from the rear poly to the headliner cover poly. Then down the length off the headliner cover.



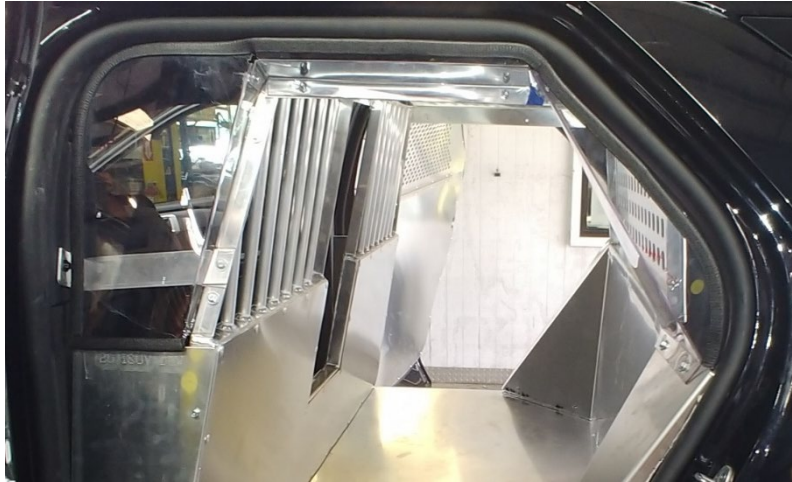
You will continue to run the trim to the end of the headliner cover and continue the trim onto and down the front poly.



With the trim fully installed you should have a finished look as shown in the photo below.

!!CAUTION!!

!!Be sure not to drill or screw into any wiring while mounting equipment!!



Step #14 Installing the Front Filler Wing

You will now install the front lower aluminum wing. You'll want to position this wing to fill the gap between the front partition and the B-Pillar. Once you have the wing positioned to cover the gap you'll use 3 each 1" self-tapping screws to fasten the wing to the K9 front partition.



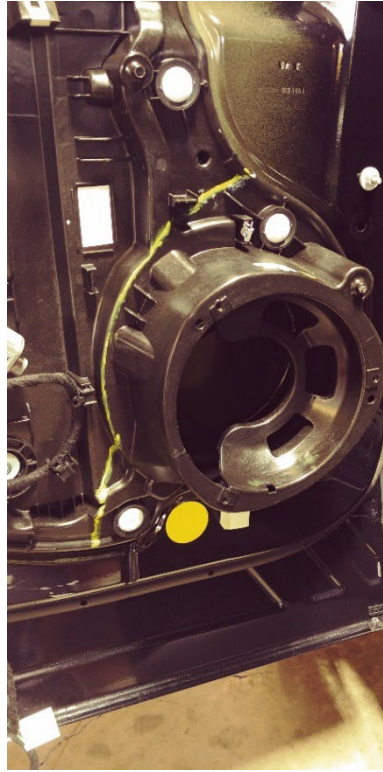
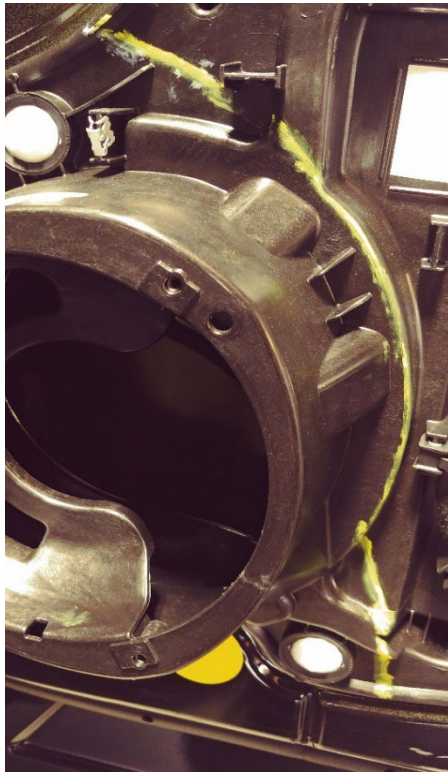
Utilize the
three pilot
holes in the
wing

!!CAUTION!!

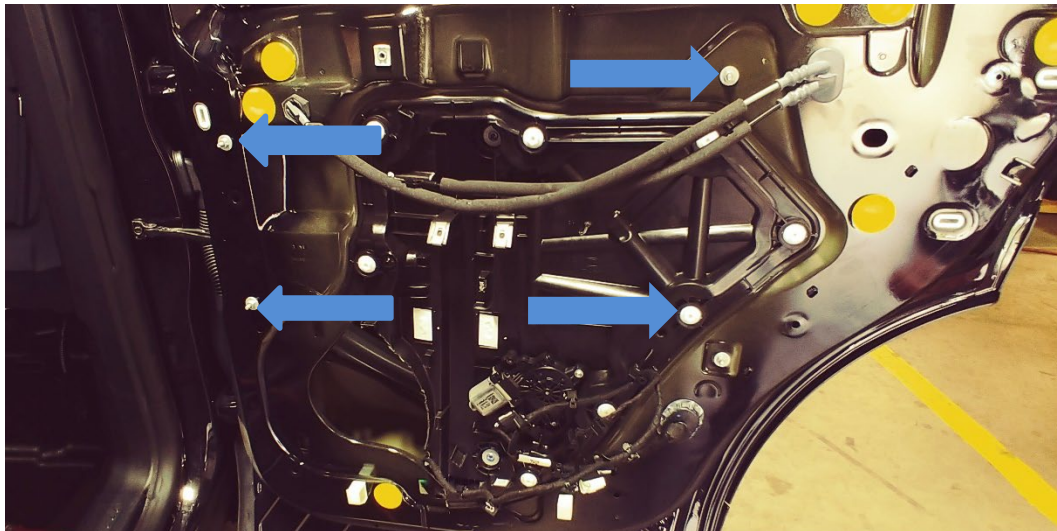
!!Be sure not to drill or screw into any wiring while mounting equipment!!

Step #15 Removing the Factory Door Panels

Remove the factory Door Panels. The speaker pod will need to be removed. It will need to be cut around as the pictured yellow line shows. Making sure to leave three of the locking lugs attached to the speaker pod. This will allow the pod to be reinstalled if needed. You will also cut the stud ends pictured. You will cut them just above the nut.



NOTE: It's recommended to use a die grinder with a cut off wheel to remove the speaker pod.



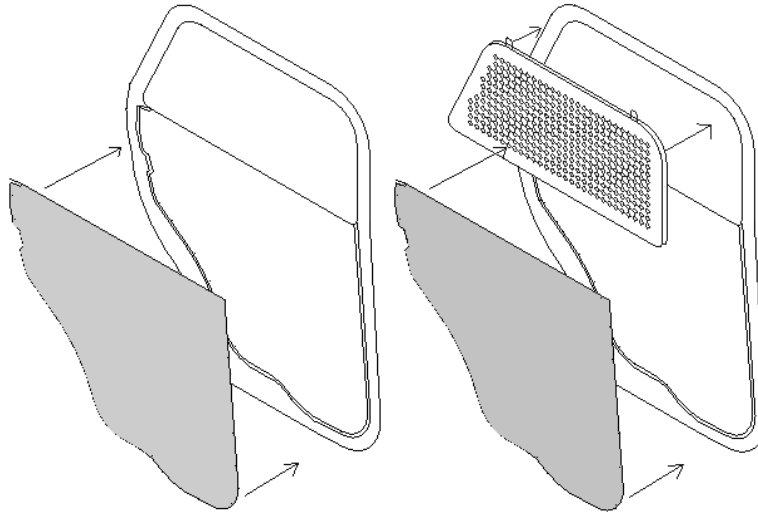
!!CAUTION!!

!!Be sure not to drill or screw into any wiring while mounting equipment!!

Step#16 Installing the Door and Window Panels

Position the door trim panels as shown in the below diagram. Using the Predrilled holes as a pattern mark the vehicle door frame for pilot holes that will be drilled. ****Only drill one on each side for now just to hold door panel in place****

(After you have two screws holding the door panel in place, set the window guard and check for proper alignment. The window guard will be hinged to the door panel once both are set with proper alignment.)



Once you have the Window Guards and Door Panels set with proper alignment. Check the holes that were marked for the door panel (Remark them if necessary) and drill the pilot holes using a 9/64" drill bit. Now fasten the door panel to the door frame using 16 ea. #8 x 3/4" screws. Set the window guards in place and connect the hinge that comes attached to the window guards to the door panels with 11 ea. #8 x 3/4". Now drill a pilot hole for each of the tabs on the window guard and fasten them down using the supplied 6 ea. # 8 x 3/4" Phillips Head screws. See picture below for completed door and window panels.



!!CAUTION!!

!!Be sure not to drill or screw into any wiring while mounting equipment!!

Step #17 INSTALL THE RUBBER MAT

Just lay the rubber mat into the pan. Again make sure you keep dry under the mat this will help keep the coating from peeling off the unit.

