



# COOL GUARD PLUS M910-01

## 2020 FORD EXPLORER INSTALLATION INSTRUCTIONS

### **American Aluminum**

[www.EZRiderOnline.com](http://www.EZRiderOnline.com)

3882 U.S. Hwy 19 South

Perry, Florida 32348

PH: 1-800-277-0869

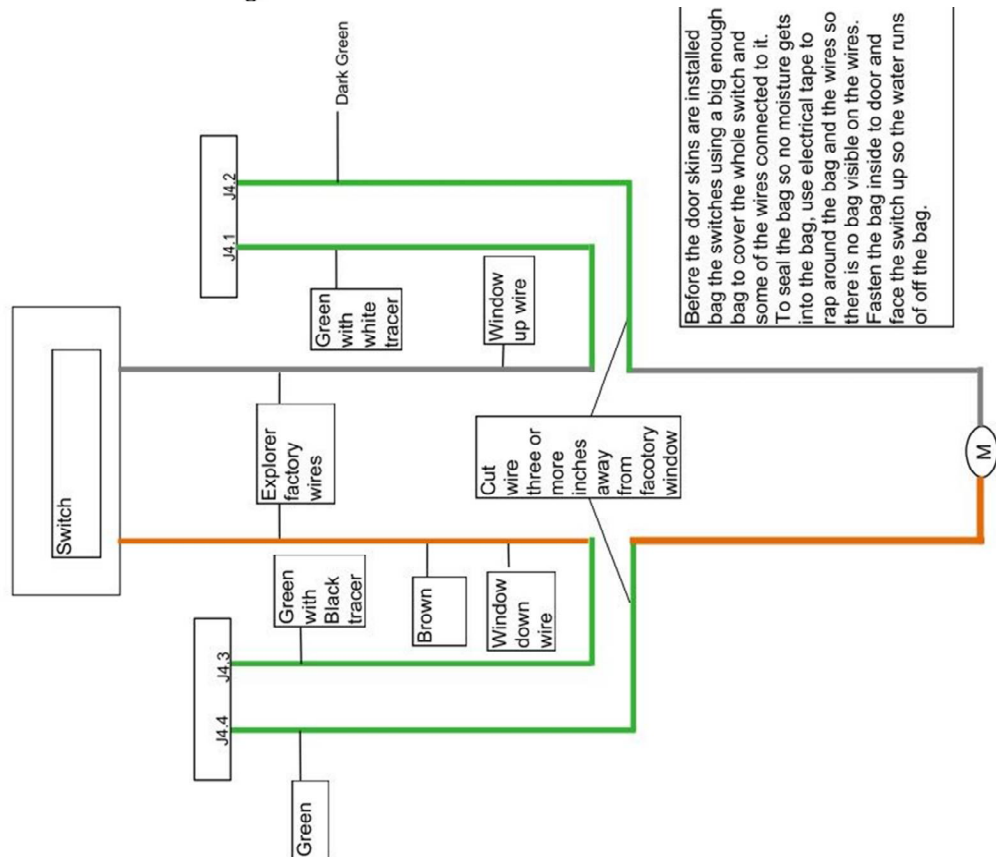
Fax: (850)-584-8485

**\*Please read and fully understand assembly instruction before installing the unit\***

**For Assistance Call 1-800-277-0869**

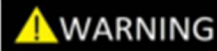
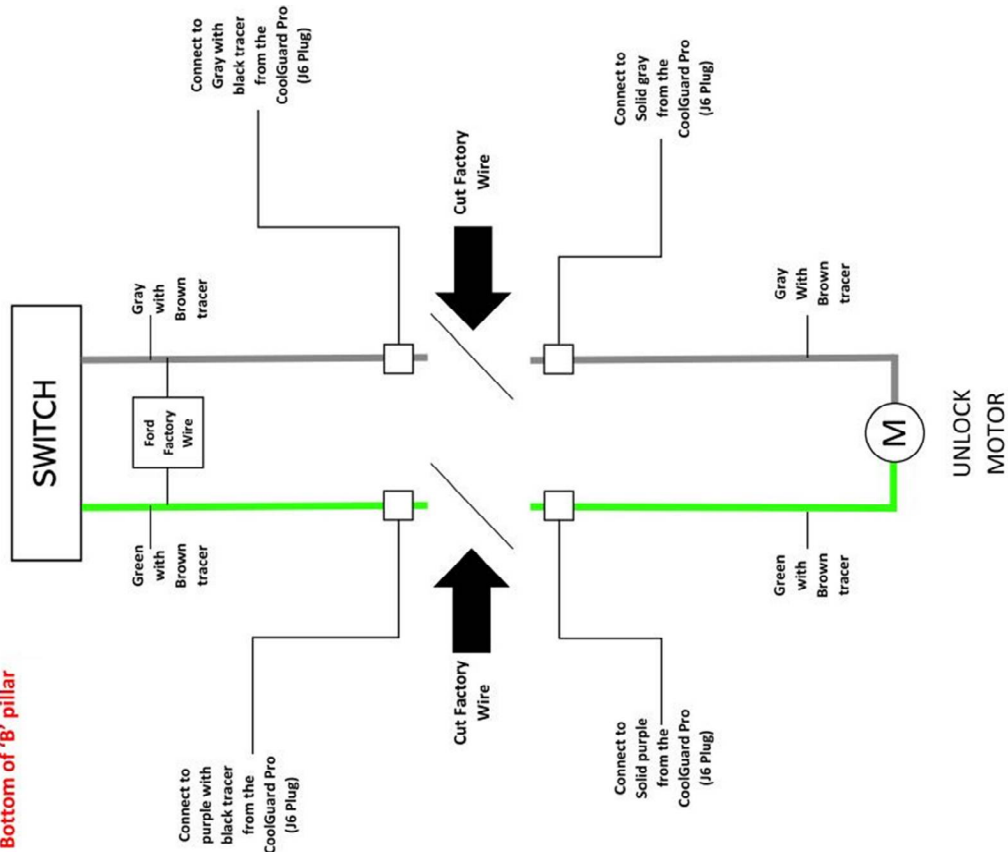
Please review and double check the unit's Inventory checklist to make sure all components are included

## J4 Harness Window Wiring Diagram



## Ford Unlock System 2020

Make connection  
At  
Bottom of 'B' pillar



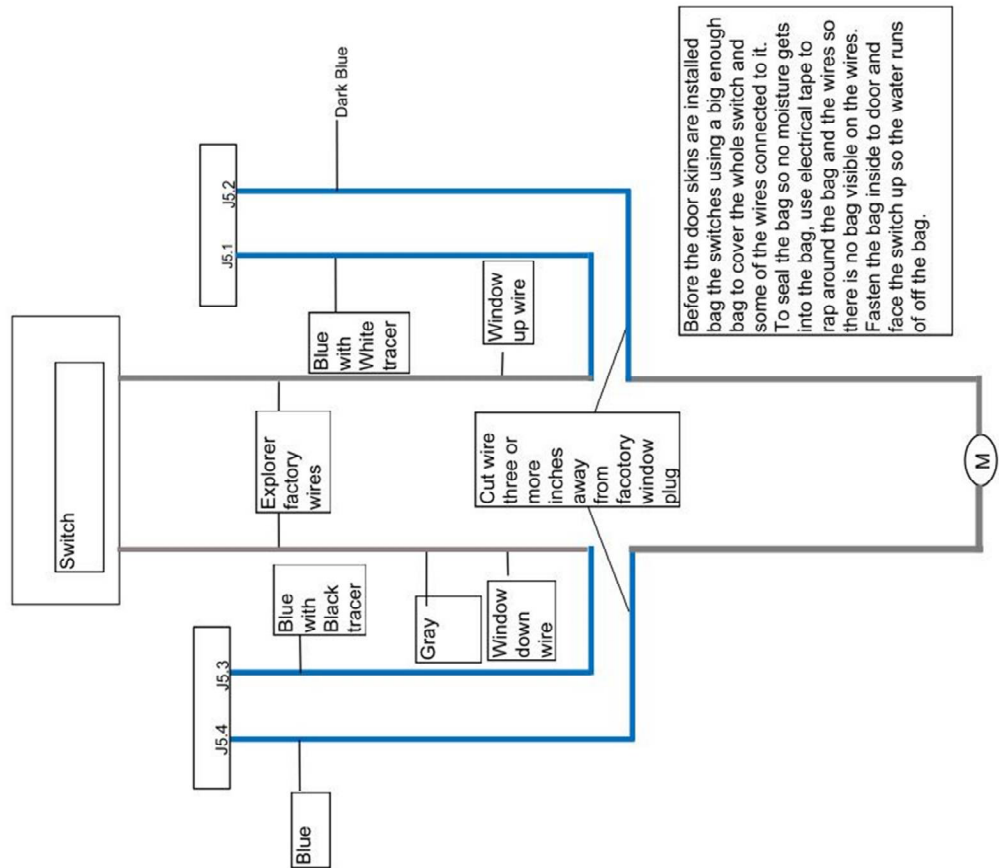
READ ANY AND ALL  
INSTRUCTIONS BEFORE  
CONDUCTING INSTALL /  
REPLACEMENT

FAILURE TO FOLLOW  
INSTRUCTIONS CAN LEAD  
TO INJURY AND / OR  
DAMAGE OF PRODUCT

USE APPROPRIATE  
PERSONAL PROTECTIVE  
EQUIPMENT WHEN  
CONDUCTING INSTALL /  
REPLACEMENT

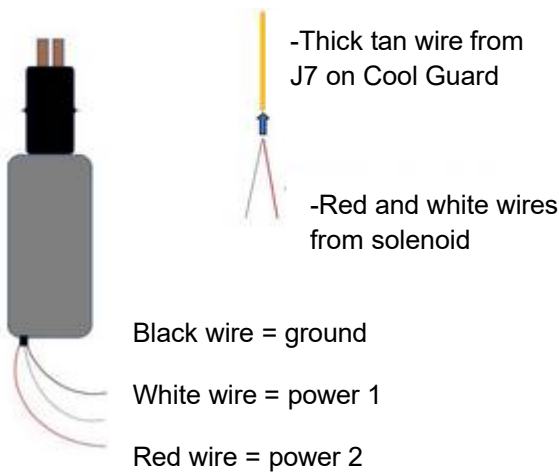
CONTACT AMERICAN  
ALUMINUM /CAMLOCKER AT  
(800) 277-0869 WITH ANY  
QUESTIONS BEFORE  
PROCEEDING

## J5 Harness Window Wiring Diagram



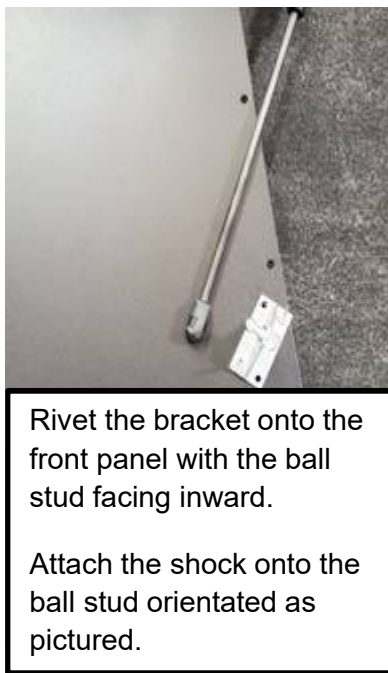
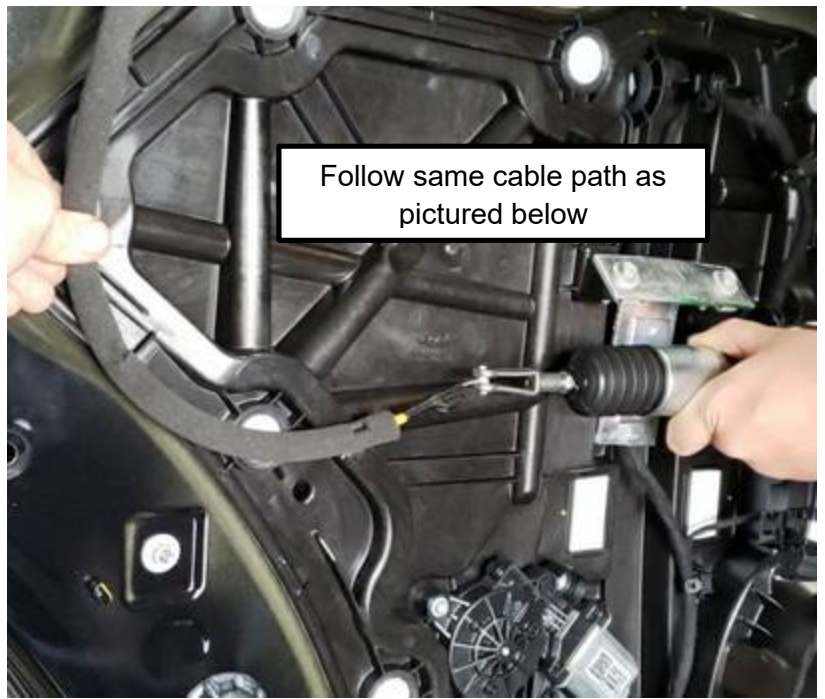
## How to Wire the Solenoid

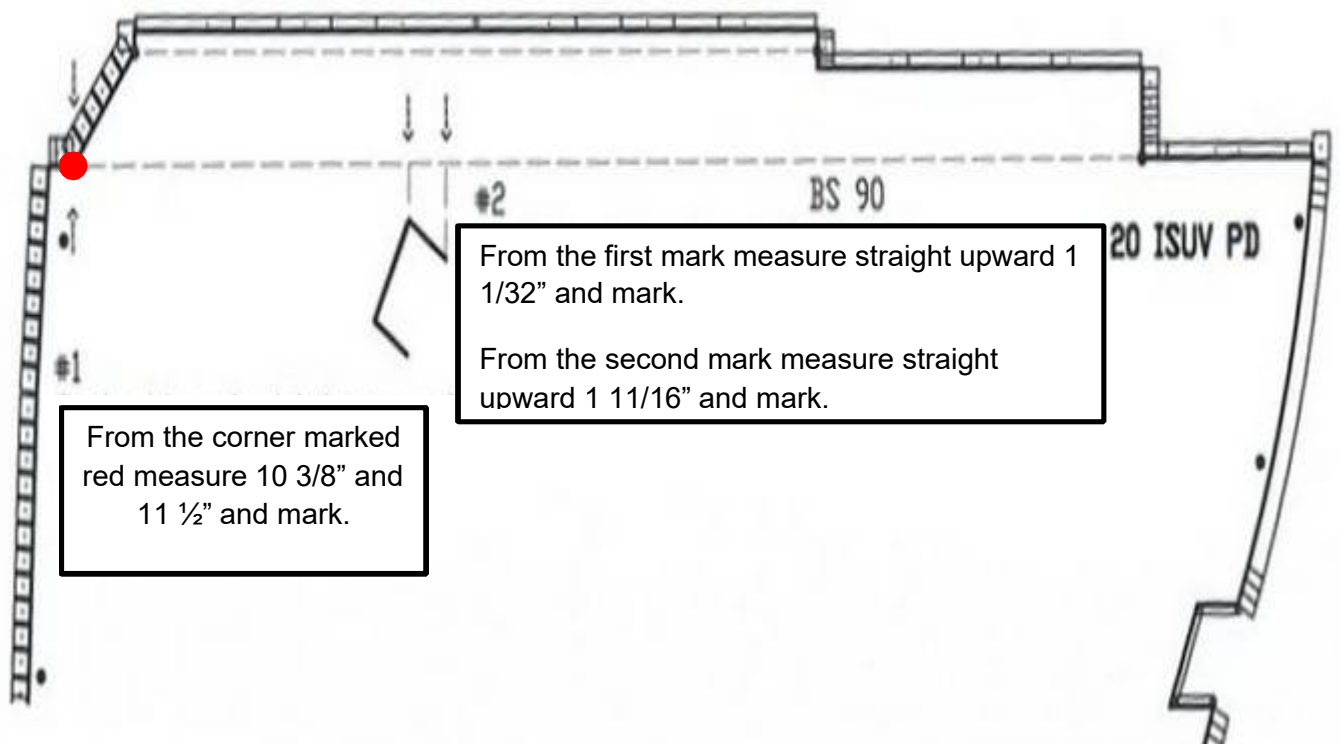
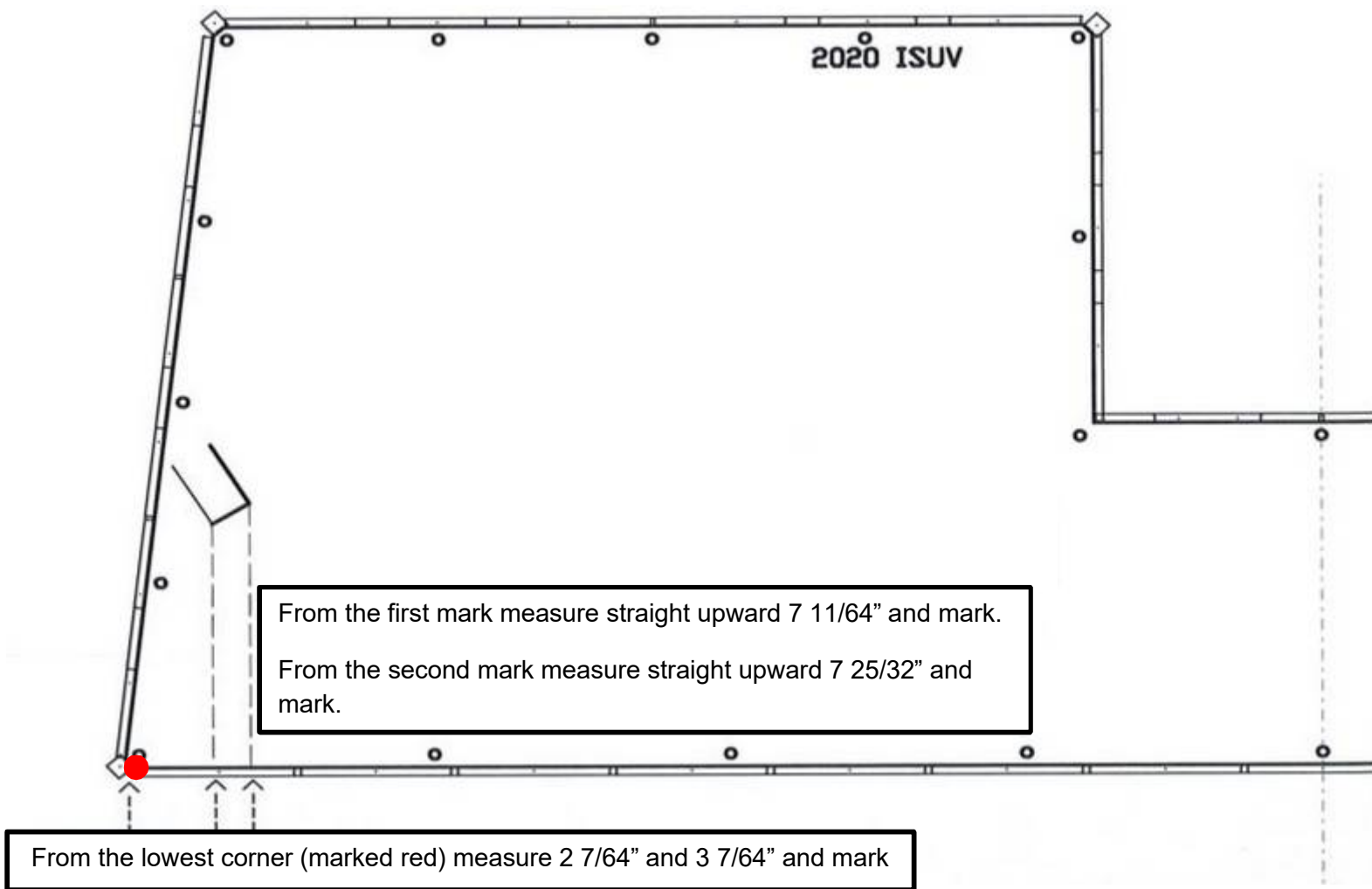
- The thick tan wire connected to J7 on the PCM needs to be wired into both the Red and White wire (Power 1 and Power 2).
- The black wire on the Solenoid needs to be grounded to the chassis of the vehicle with a wire gauge of 12 or more.



## Emergency Light Wiring

The emergency light function on the Cool Guard (J5) and (J6) both send a 12v 2a current. The wires can be connected to any input that can accept an output. All emergency lighting systems that have a way to connect to and is able to accept an output of power of 12v. **\*Do not wire to an output, the wires cannot take any output to them\***





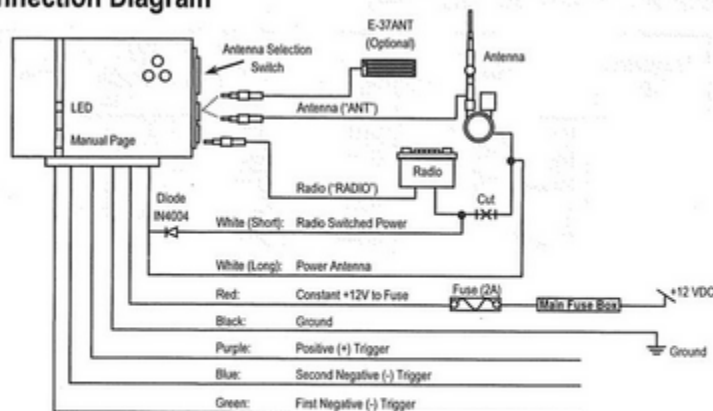
## Where to mount temperature probes

Mount the temperature probes as indicated where the arrows are pointing in the below picture (right shoulder of driver and left hip of passenger). To mount the probes, use the supplied wire clamp and self-tapper's to screw the clamp into the cage to secure the temp probes. When mounting the probes make sure that the tip and cable are out of the way of sliding door and out of the dogs reach so that they cannot be chewed on. We recommend this place to get a low and high temperature reading of the vehicle.



### ENFORCER E-37EV Alarm Pager System

#### Connection Diagram



#### Programming

The receiver must learn the transmitter's code before it can receive signals from the transmitter. The receiver can learn the page codes of up to 3 transmitters.

1. Turn the receiver OFF. Then press and hold the /OFF switch and slide it to the position. Continue holding for 3 seconds until the receiver beeps once.
2. The PAGE LED will flash GREEN at a steady rate. The ZONE LED will be solid ORANGE. This means the receiver is ready to learn the page code of the first transmitter.
3. Press the manual page button on the transmitter. This will send the page signal to the receiver. The receiver will beep twice and the LEDs will turn off to indicate the code has been learned. The receiver will beep five times in four minutes if no code is learned.
4. To learn a second (or third) transmitter, repeat step 1 then press down on the /OFF switch once. The PAGE LED will begin flashing RED for the second transmitter and ORANGE for the third transmitter.
5. Press the manual page button on the second (or third) transmitter. The receiver will beep twice and the LEDs will turn off to indicate the page code has been learned. The receiver will beep five times in four minutes if no code is learned.
6. If no additional transmitters need to be learned then move the /OFF switch back to the OFF position.

#### Notes:

- The receiver remembers the transmitter codes in EEPROM memory even without power for over one year. The receiver does not need to re-learn the transmitter codes after battery replacement.
- Only one of each transmitter ID may be learned at a time. For example, if a green transmitter is already programmed and a new green transmitter is learned, the previous green transmitter will no longer work.