



Chevy/GMC 15 Passenger Van Screen System

Assembly/Installation Instructions

American Aluminum
www.EZRiderOnline.com
3882 U.S. Hwy 19 South
Perry, Florida 32348
PH: 1-800-277-0869
Fax: (850)-584-8485

Please read and fully understand assembly instruction before installing the unit

For Assistance Call 1-800-277-0869

Please review and double check the unit's Inventory checklist to make sure all components are included



READ ANY AND ALL INSTRUCTIONS BEFORE CONDUCTING INSTALL / REPLACEMENT

FAILURE TO FOLLOW INSTRUCTIONS CAN LEAD TO INJURY AND / OR DAMAGE OF PRODUCT

USE APPROPRIATE PERSONAL PROTECTIVE EQUIPMENT WHEN CONDUCTING INSTALL / REPLACEMENT

CONTACT AMERICAN ALUMINUM /CAMLOCKER AT (800) 277-0869 WITH ANY QUESTIONS BEFORE PROCEEDING

BEFORE YOU BEGIN

Due to factory changes from year model, the location of vital wiring and vehicle wall thickness cannot be pre-determined. Carefully pull away factory trim and inspect areas to be drilled to prevent any damage to wiring, vehicle safety equipment or windows.

Installing the Window Screens

Step 1

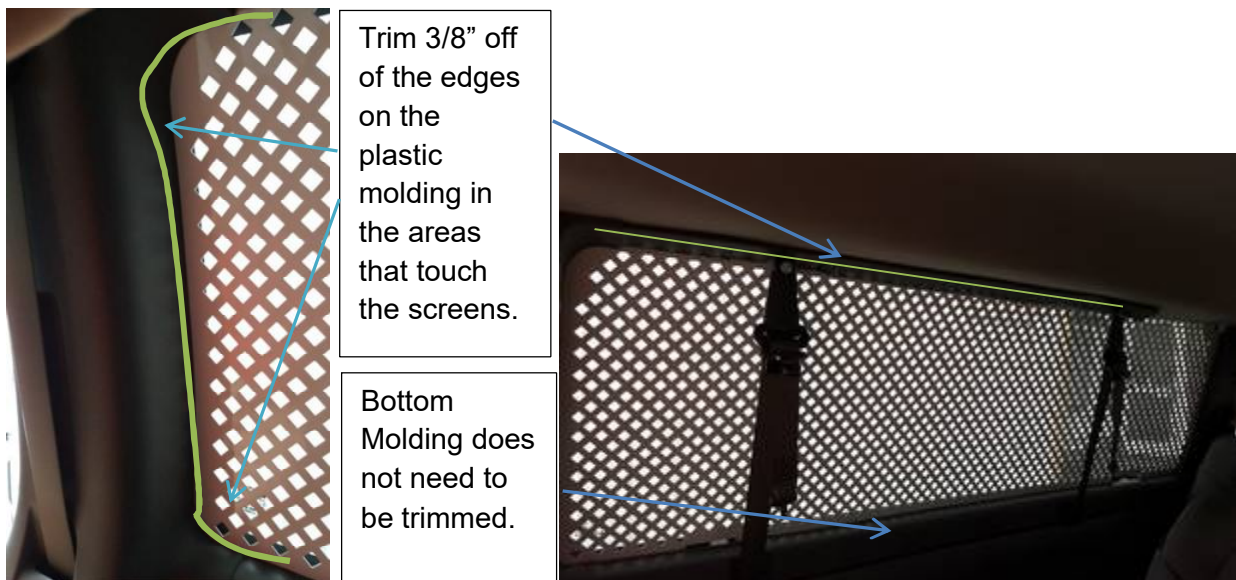
Install all window screens before installing the front bulkhead partition.

Carefully remove all factory trim around all windows that are receiving window screens.

REFER TO PAGE 3 & 4 FOR SCREEN DIAGRAMS

Step 2

All factory plastic trim pieces will need to be trimmed 3/8" where they would normally sit against the windows so that they can be snapped back in place after window screen is installed.



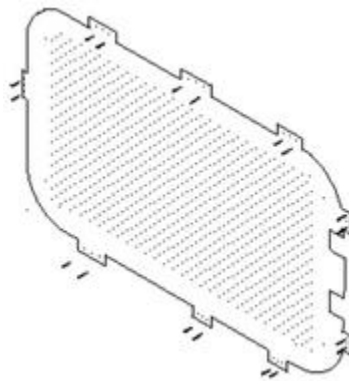
Step 3

All window screens come with the mounting tabs around the edges of the screens. Also, all window screens are designed for proper fit, this allows easy distinction of which screen to use for each window. If screen does not fit properly then it is NOT for that window.

Hold window screen in proper placement, inspect to make sure window and window screen match in shape and size, use the holes in the screen tabs to mark the placement of the pilot holes.

Step 4

Hold Window screen in place and fasten to vehicle using the supplied drill & tap 8x1/2 and 8x3/4 screws from your hardware kit.



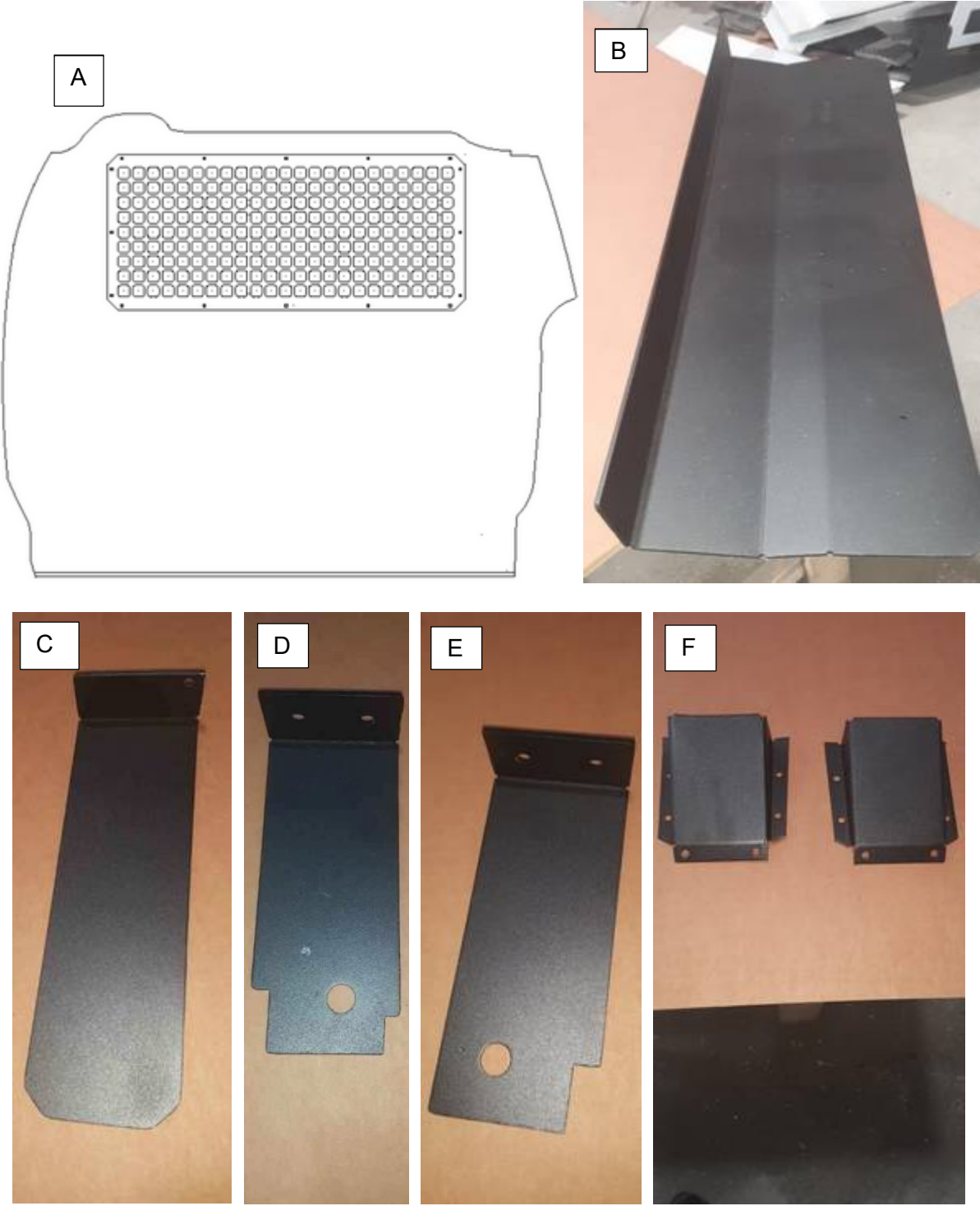
Repeat for each window until complete.

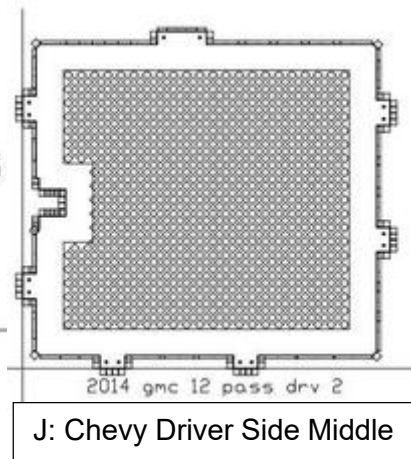
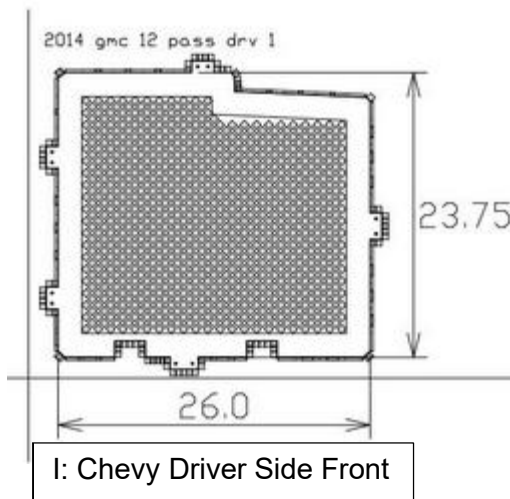
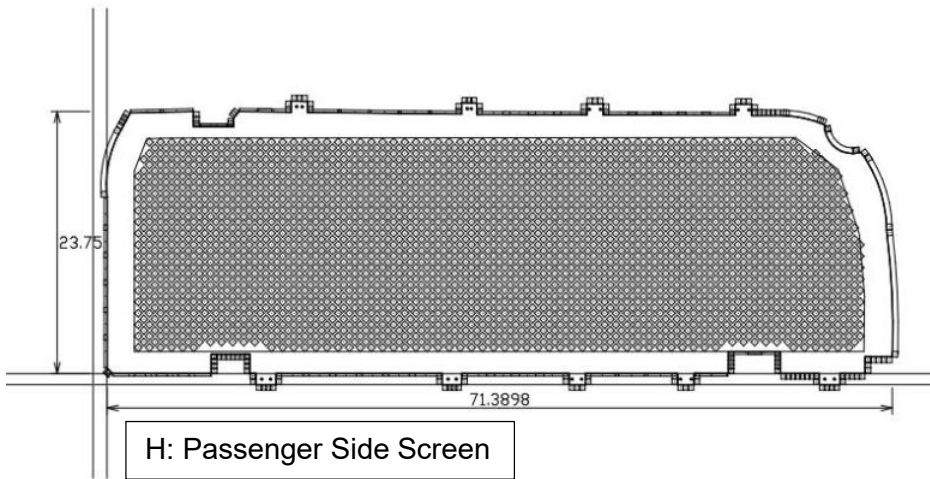
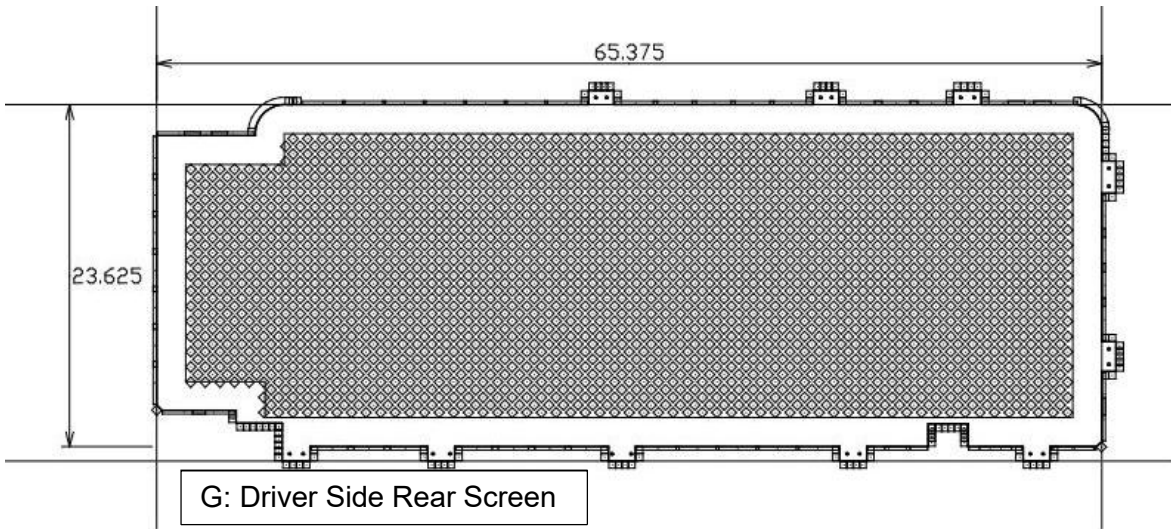
Step 5

Reinstall the factory plastic trim around each window using the factory trim clips that previously held the plastic trim on.



Pictures on the following pages show the screen diagram and location.





Checklist:

- | | |
|------------------------------|---------------------------------|
| A) Front Bulkhead-1 | D) Passenger Side Floor Mount-1 |
| B) Top Lock Plate | E) Driver Side Floor Mount-1 |
| C) Seatbelt Mounting Bracket | F) Door Striker Covers-2 |

Hardware List:

- | | |
|---------------------------------|--------------------------------|
| 15- ¼"-20x3/4" Carriage Bolts | 70 – 1/2" Rivets |
| 15- ¼" Flat Washers | 10 – 1 ½" Self-Tappers Screws |
| 15- Black Acorn Nuts | 120- ½" Rivets for Door Panels |
| 70- ¼"x3/4" Self-Tapping Screws | 8 -- ½" Flat Washers |

Step 1: Installing the mounting brackets

Remove the mounting nut on the rear and outside of each front seat. Place the mounting brackets over the bolt. You will need to place the washers on the seat bolts to keep the bracket off of the plastic molding. Place the mounting bracket on the bolts extending to the rear of the vehicle. Picture below.





Step 2: Sliding the Bulkhead into Place.

Carefully slide the bulkhead into the van with the welding on wings facing the front of the van. Making sure that the edges don't hang on anything and tear the interior or seats. Now place the large upper lock plate into position above the bulkhead. Picture below.



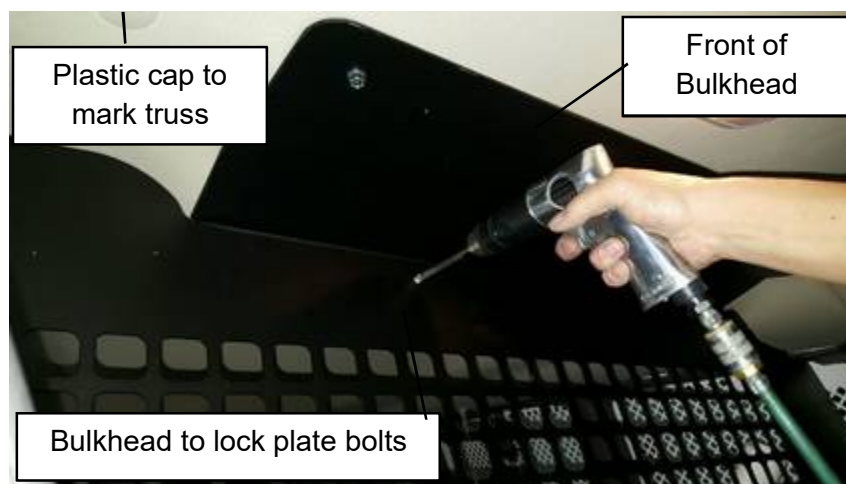
Now you can slide the bulkhead into place. The passenger side wing will be flush with the head rest. Make sure that the bulkhead is push up to the mounting bracket at the bottom of the bulkhead.

Step 3: Mounting the Bulkhead

Start by attaching the driver and passenger side wing to the side of the van with 1" self-tapping screw. Now make sure the driver side is push into place. Now attach with 1" self-tapping screw. See pictures.



Now lift lock plate into position. There will be plastic cover at the truss of the vehicle in the roof. This is where the screw needs to attach to the van through the lock plate. Now using the 1 1/2" self-tapping screws. Attach the lock plate to the van making sure the lock plate is tight against the back of the bulkhead. Now you are ready to attach the lock plate to the bulkhead using 4 ea. 1/4" carriage bolts. See picture below.





Now drill 2 ea. 5/16" holes per side in the bottom mounting brackets. Attach using 2 ea. 1/4" carriage bolts per side. See picture below.



Installing the Door Panels

The door panels simply line up on the doors as shown. Then you drill at the pre-punched holes using a 13/64" Drill bit. Drill one hole in the top corner and rivet it to the door using the supplied 1/2" rivet. Continue down each side stopping to apply rivets after every 4 or 5 holes drilled.

Driver Side Rear Door



Passenger Side Rear Door



Passenger Front Barn Door



Passenger Rear Barn Door

