



# 2011-2020 Durango K9 Platform

## Assembly/Installation Instructions

**American Aluminum**  
[www.EZRiderOnline.com](http://www.EZRiderOnline.com)  
3882 U.S. Hwy 19 South  
Perry, Florida 32348  
PH: 1-800-277-0869  
Fax: (850)-584-8485

**\*Please read and fully understand assembly instruction before installing the unit\***

**For Assistance Call 1-800-277-0869**

Please review and double check the unit's Inventory checklist to make sure all components are included

**WARNING**

READ ANY AND ALL INSTRUCTIONS BEFORE CONDUCTING INSTALL / REPLACEMENT

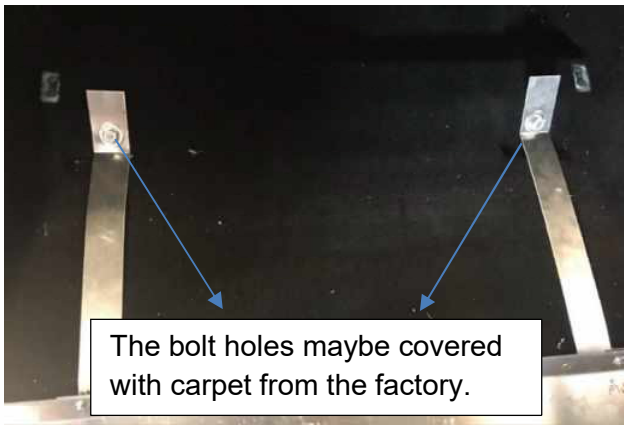
FAILURE TO FOLLOW INSTRUCTIONS CAN LEAD TO INJURY AND / OR DAMAGE OF PRODUCT

USE APPROPRIATE PERSONAL PROTECTIVE EQUIPMENT WHEN CONDUCTING INSTALL / REPLACEMENT

CONTACT AMERICAN ALUMINUM /CAMLOCKER AT (800) 277-0869 WITH ANY QUESTIONS BEFORE PROCEEDING

### Step #1 Installing the Pan

Prior to Installation, first remove seating from the rear compartment and the false floor in the cargo area. You will then use the provided bolts to mount the steel pan bracket to the factory mounting points that are located on the outer portion of the factory hump in the floor. Once installed the false floor can be reinstalled.

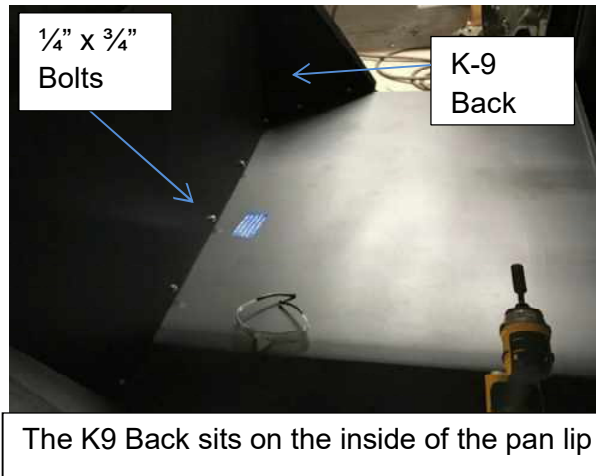


The pictured brackets are aluminum for a better visual representation. The actual brackets will be black powder coated steel.

Now you are ready to install the pan. You will need 2 ea.  $\frac{3}{4}$ "x  $\frac{1}{4}$ " bolts, 4 ea. flat washers, and 2 ea. locknuts. These will attach the rear of the pan to the mounting bracket.

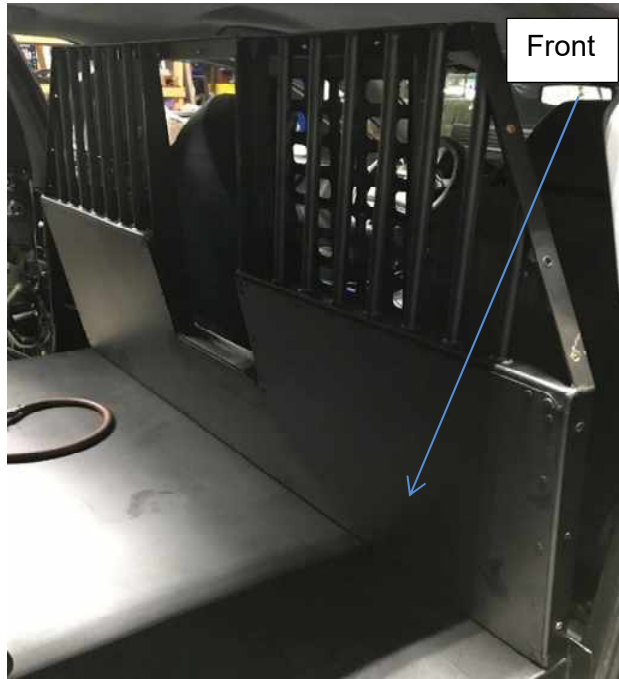
### Step #2 Installing the Back

Once the Pan is installed find the K-9 Back and set it on top of the pan in front of the 2" lip and line the predrilled holes of the back with the nut inserts in the back lip of the pan. This will use 9 ea.  $\frac{3}{4}$ "x  $\frac{1}{4}$ " bolts with washers.



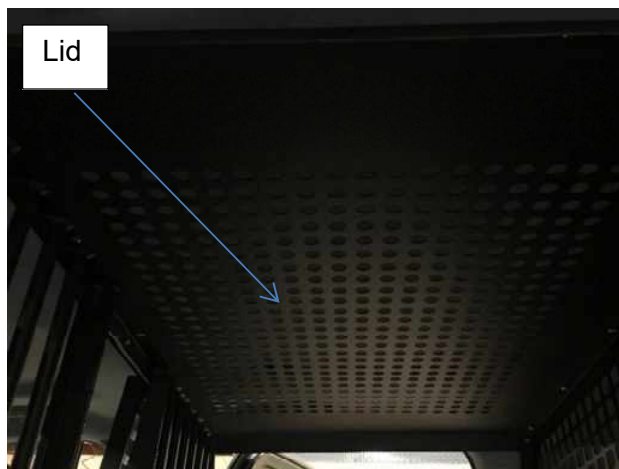
### Step #3 Installing the Front

Position the K-9 Front on the front of the Pan behind the 2" lip with the door facing the front of the vehicle. Align the predrilled holes (nut inserts) of the front with the holes in the pan and fasten them together with 4 ea. 1/4" x 3/4" Hex head bolts with washers. Bolts are on the outside of the cage.



### Step #4 Installing the Roof

Install the roof (canopy) on top of the unit. The Front and back will have predrilled holes that line up to the holes in the canopy. Use 11 ea. 3/4" x 1/4" Hex bolts in all predrilled holes on the top and the corners.



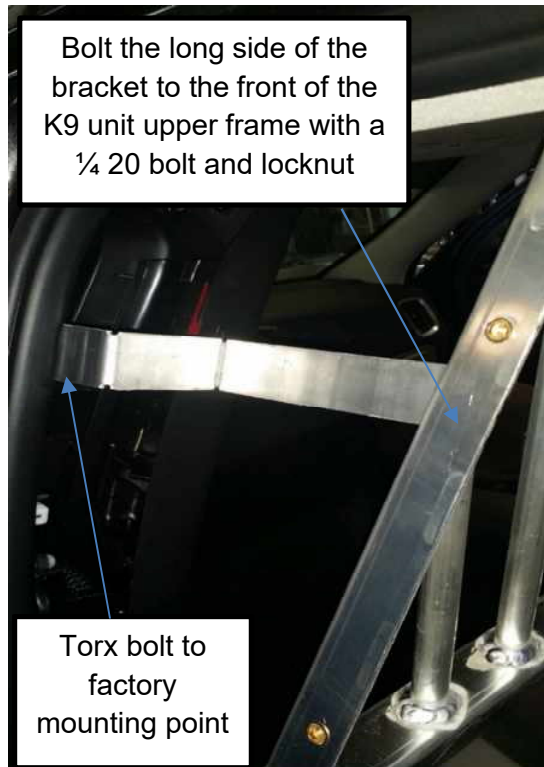
## Step #5 Installing the Front Wings

The front wings are installed one on each side with 3 1" self-tapping screws. See below picture.



## Step #6 installing the grab handle braces

Now that everything is in place you can now install the grab handle brace. You will need to remove the upper trim on the B pillar. Remove the Torx head screw holding the seatbelt mount in place and place the short end of the grab handle bracket under the bolt and tighten back down. You want the bracket to exit the B pillar trim from the grab handle slot in the trim.



## Step #7 Installing the Polycarbonate (Poly)

Attach the front Poly using 2 each 1/4" x 3/4" bolts, washers per side through the pre drilled holes.



Install Rear Poly Wings at this time. Using 1/4 20 hex bolts and flat washers in the nut certified locations



Also you will need to install the Poly between the top of the unit and the door. Using 3 ea. 3/4" x 1/4" bolts with washers per side using the predrilled holes. See detail below.



**Step #8 Installing the Rubber Mat**

Lay the rubber mat on top of the Pan.



\*Rubber pan mat must be completely dry before laying it on the pan after every wash to prevent water damage to the Powder Coat on the Pan\*

## Step #9 Removing the Factory Door Panels

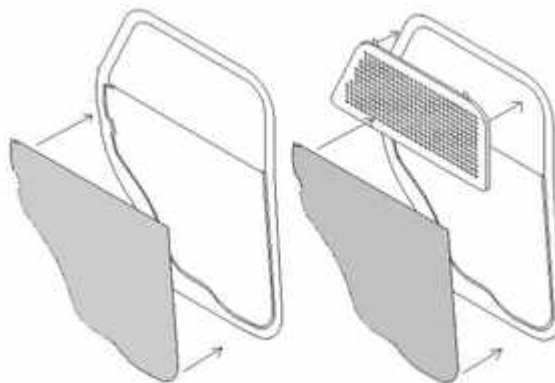
Remove the factory Door Panels. Remove the door handles and any other protruding objects such as locks. Remove the rubber seal between the door and window. See picture below.



## Step #10 Installing the Door and Window Panels

Position the door trim panels as shown in the below diagram. Using the Predrilled holes as a pattern mark the vehicle door frame for pilot holes that will be drilled. **\*\*Only drill one on each side for now just to hold door panel in place\*\***

(After you have two screws holding the door panel in place, set the window guard and check for proper alignment. The window guard will be hinged to the door panel once both are set with proper alignment.)



Once you have the Window Guards and Door Panels set with proper alignment. Check the holes that were marked for the door panel (Remark them if necessary) and drill the pilot holes using a 9/64" drill bit. Now fasten the door panel to the door frame using #8 x 3/4" screws. Set the window guards in place and connect the hinge that comes attached to the window guards to the door panels with 11 ea. #8 x 3/4" screws for hardware kit. Now drill a pilot hole for each of the tabs on the window guard and fasten them down using the supplied # 8 x 3/4" Phillips Head screws. See picture below for completed door and window panels.